

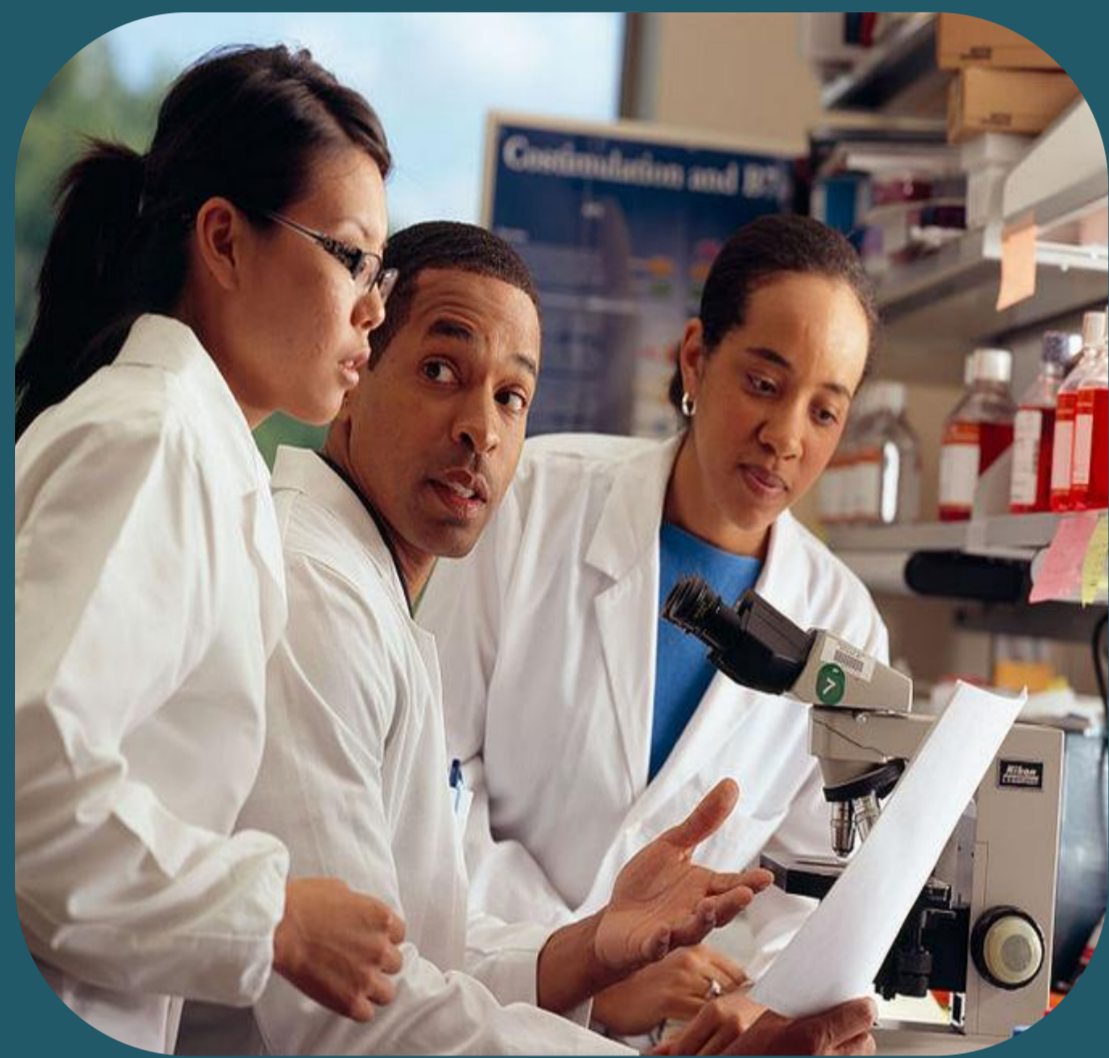
# Enhancing Feasibility: Linking Together

Authors: Shahista Hussain, R&D Manager; Fiona Parker, R&D Manager

## Impact to Researchers

Accurate assessment of feasibility enables:

- 1) Collaborative working with Trust researchers
- 2) Sign-posting to all relevant support departments; ensuring timely communication and prioritisation.
- 3) Effective implementation of key changes.
- 4) Agreement of meaningful and achievable study targets:
  - a) Reflecting on competing research activity
  - b) Available eligible patients,
  - c) Including those with rare diseases.
- 5) The main aspects of the project to be addressed efficiently.



## Adaptability

Feasibility assessment has achieved a culture which:

- 1) Adapted in response to the changing research landscape and the requirements of the organisational implementation of HRA approval process.
- 2) Enabled a more consistent flow of information across all research-active departments within OUH.
- 3) Supported research teams in delivering trials/studies successfully at site.

Feasibility assessments have been conducted since the inception of the NIHR; based on the CRN geography and limited to high level review of projects.

The Oxford University Hospitals NHS Foundation Trust (OUH), which conducts a broad and diverse clinical research portfolio in excess of 1,800 studies, has:

- Identified significant enhancements for assessing feasibility at local Trust levels.
- Introduced feasibility questionnaires to promote better communication during study set up.



Our research portfolio management system ensures integration of feasibility assessment information as demonstrated in Fig 3.

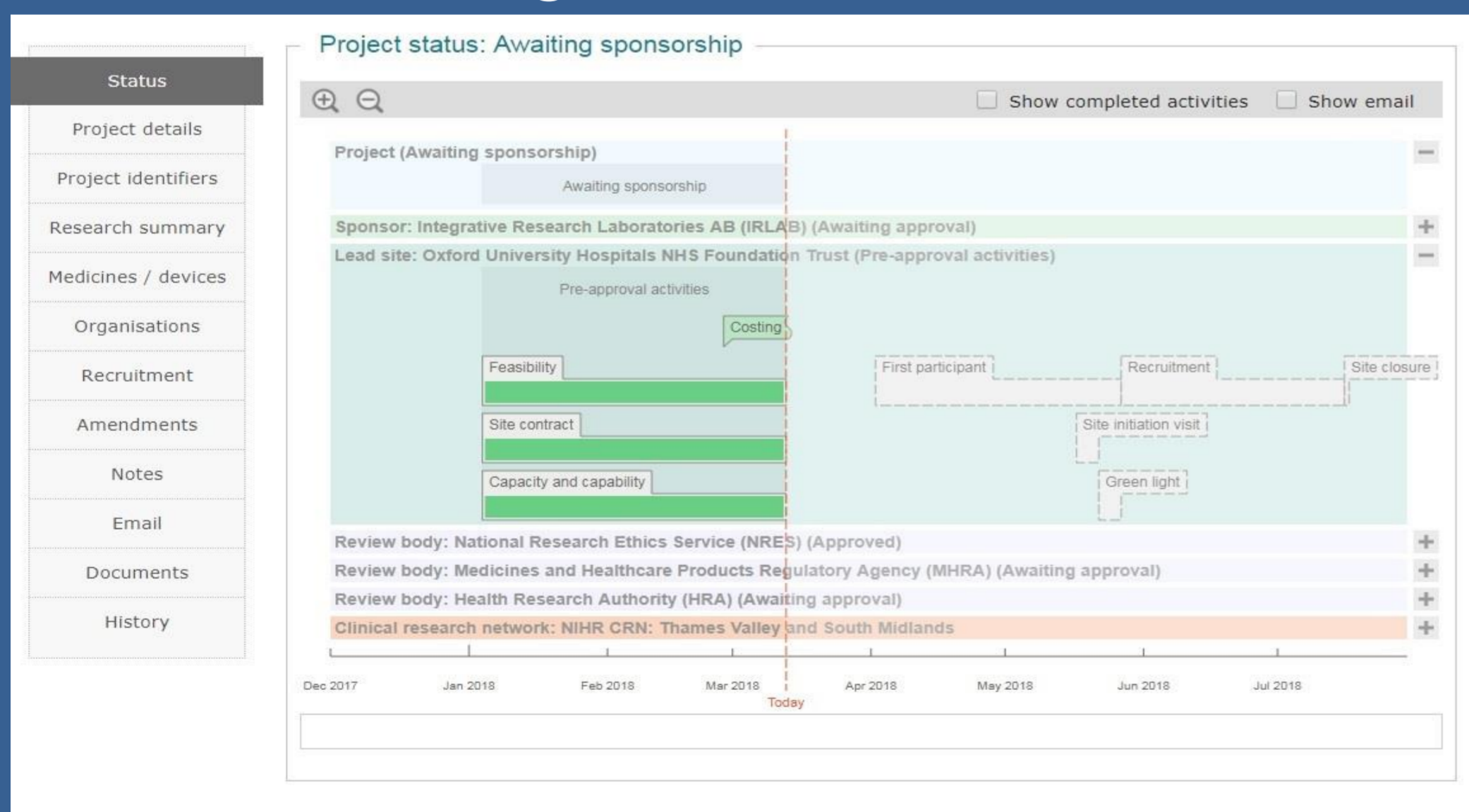


Fig 3  
Visibility of processes & key study data in Studyline:  
1) Provides a clear definition of the targets.  
2) Allows prompt follow up within the system.  
3) Enables swift resolution of discrepancies and queries regarding targets and delays.

## NIHR Contracted Metrics

Implementation and adaptation of the feasibility assessment has enabled us to:

- 1) Improve performance in first participant recruitment (Fig 1)

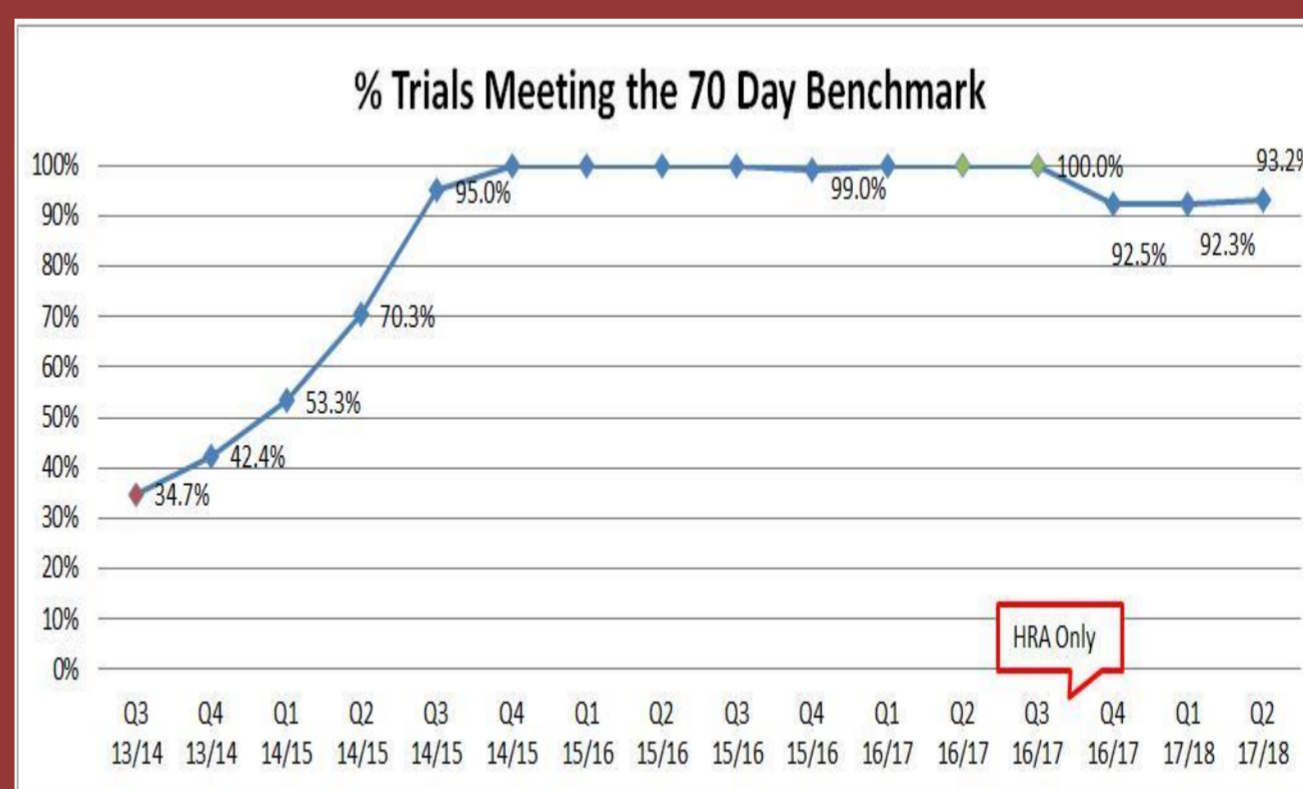


Fig 1

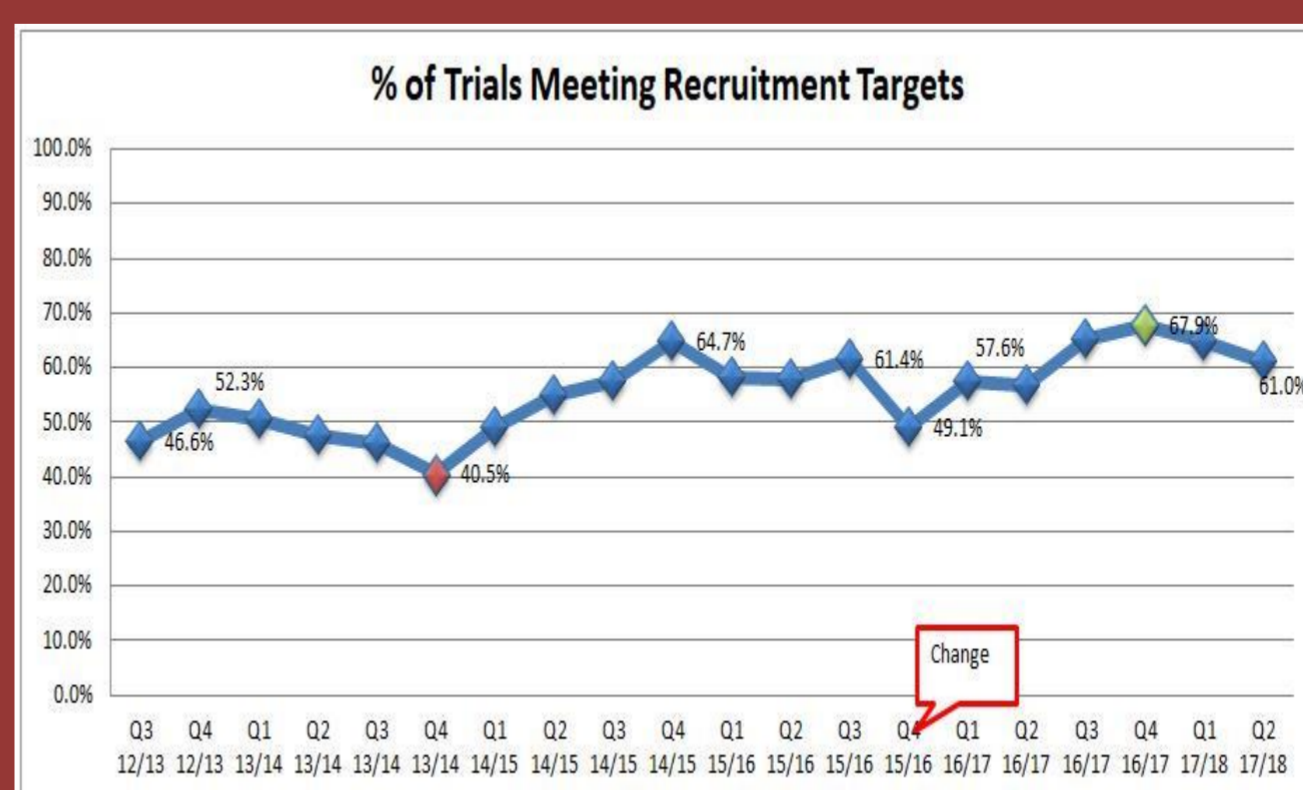


Fig 2

and research delivery year on year (Fig 2).

- 2) Consistently one of the top five NHS organisations in the NIHR Research Activity League Table.

